

St Paul's Summerville

Financial Score Card

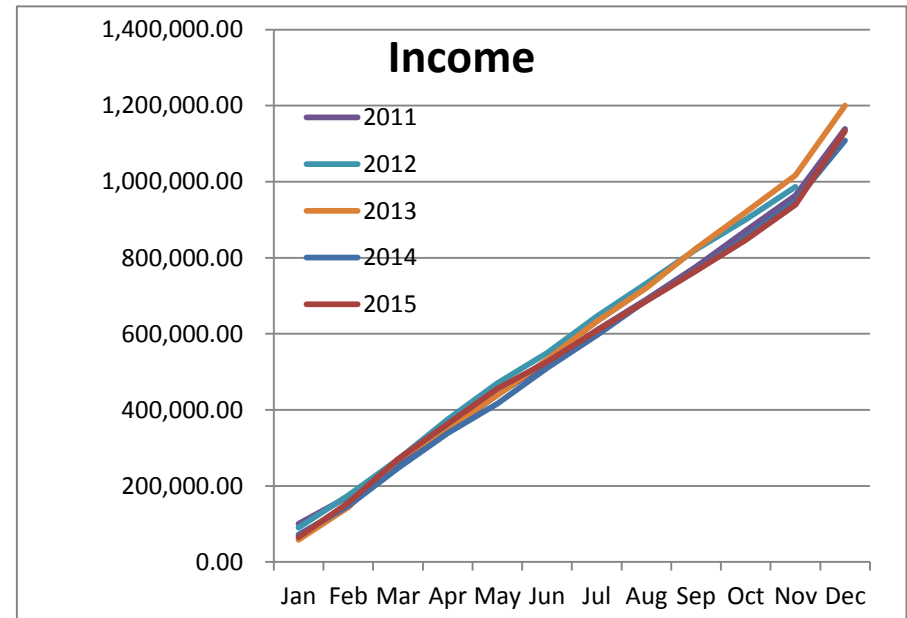
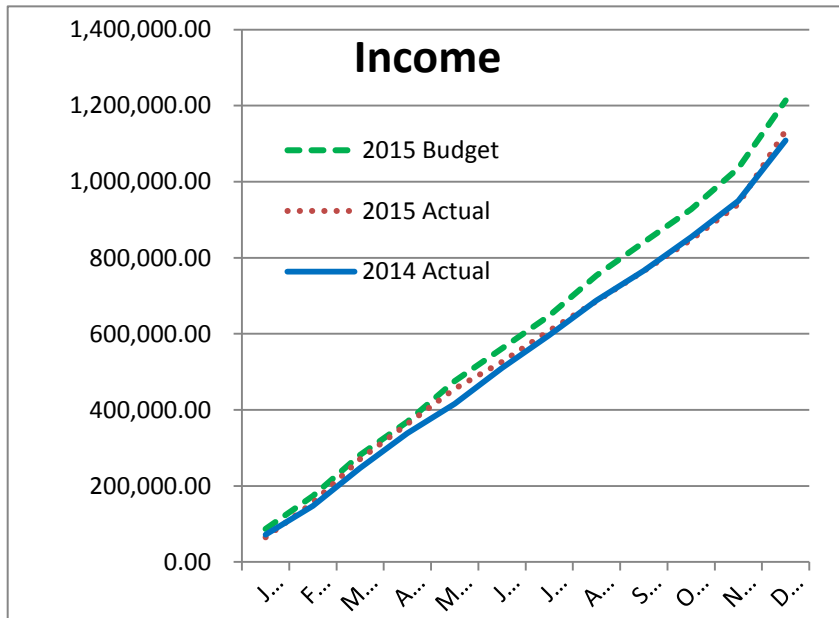
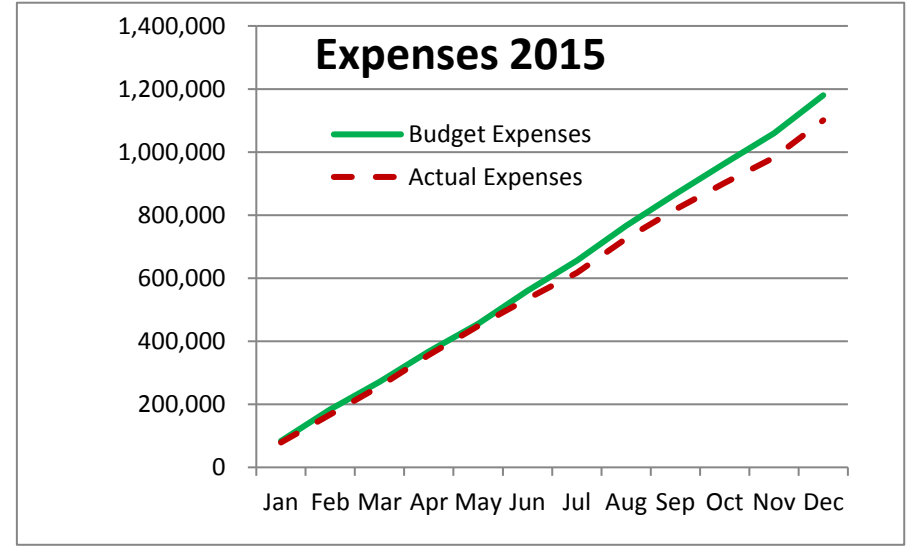
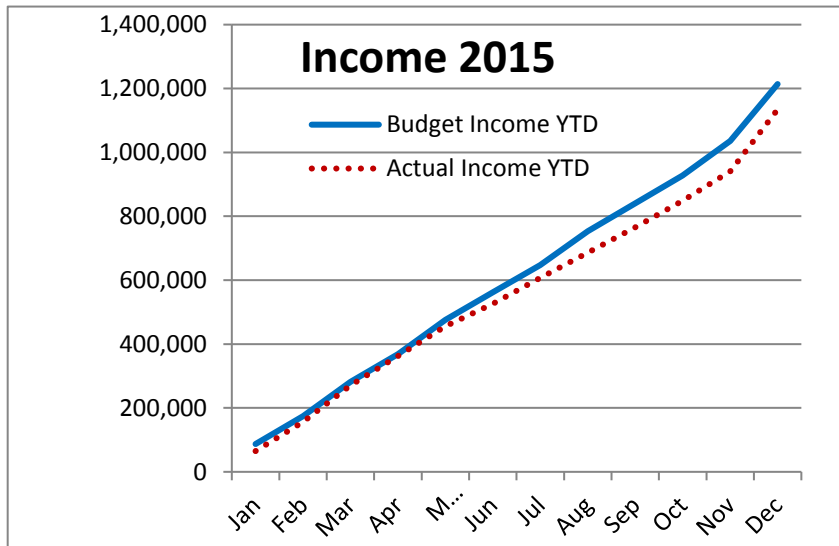
12/31/2015

OPERATIONS										
Operations Fund (year to date)				December Operations Fund Prior Years						
				2014			2013			
	<u>Budget</u>	<u>Actual</u>	<u>Difference</u>		<u>Budget</u>	<u>Actual</u>	<u>Difference</u>	<u>Budget</u>	<u>Actual</u>	<u>Diff</u>
Income	1,213,851	1,134,426	(79,425)	Income	1,196,000	1,108,331	(87,669)	1,254,466	1,200,210	(54,256)
Expenses	<u>1,180,228</u>	<u>1,100,802</u>	79,427	Expenses	<u>1,196,000</u>	<u>1,141,955</u>	54,045	<u>1,229,942</u>	<u>1,175,512</u>	54,430

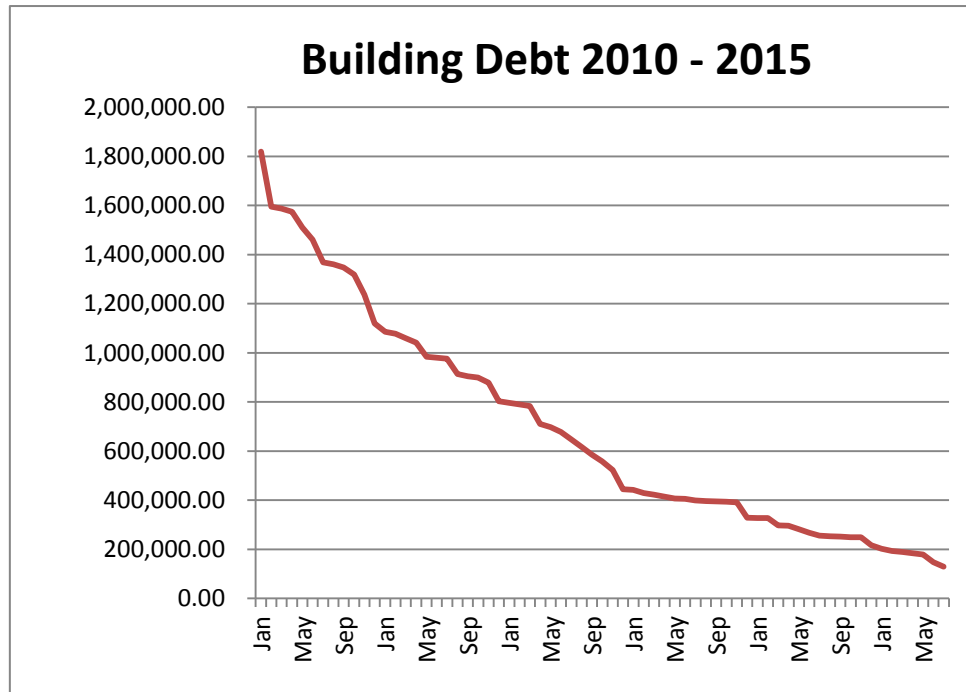
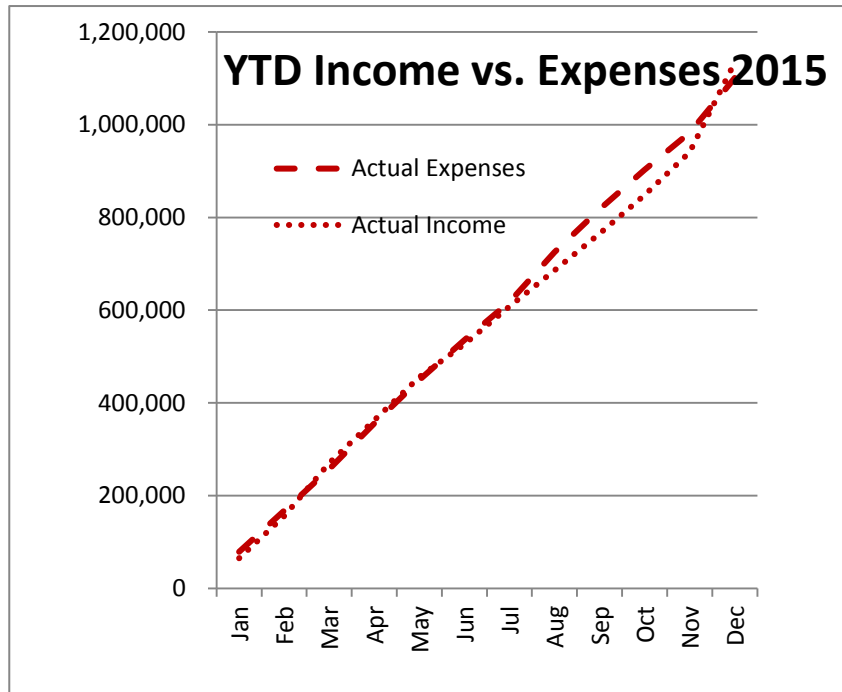
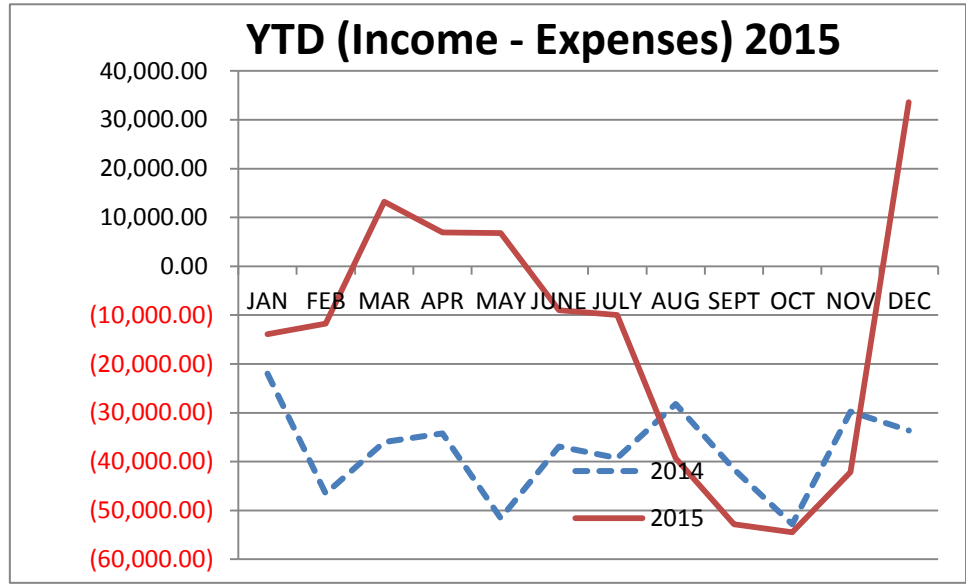
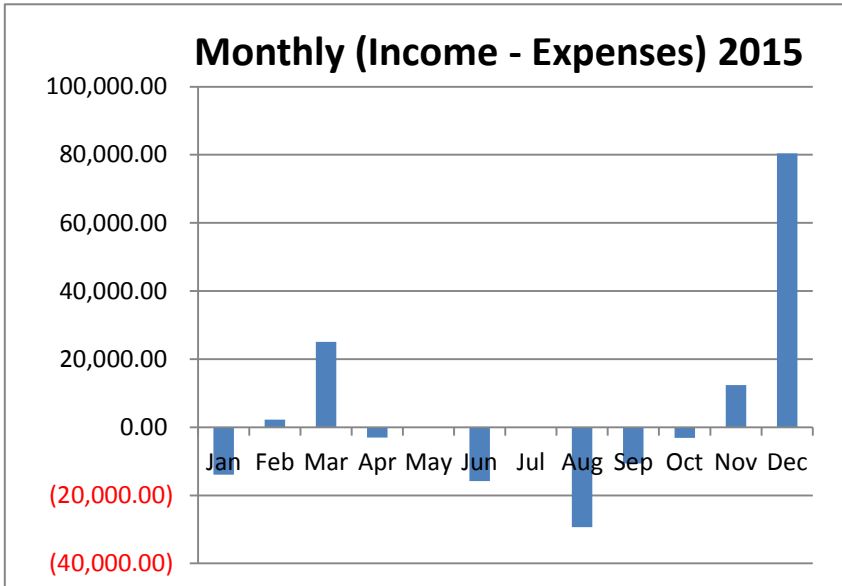
BRINGING IT HOME		
<b>Debt Owed</b>		<b>Cash Flow (year to date)</b>
Cemetery Loan	0	Balance 1/1/2015 37,210
CY Building	<u>72,667</u>	Income 107,230
<b>Total</b>	<u>72,667</u>	Expenses <b>\$106,259</b>
		Balance 38,181
		Goal (12 months of payments) 37,277
		Amount over (under) goal 904

RESERVE FUNDS			
<u>Fund</u>	<u>Value</u>	<u>Investment</u>	<u>Line Item #</u>
Building Reserve	0	Checking	1016
Investments	24		1061
Bdgs & Grnds Projects	3,787	Checking	2148

## St Paul's Summerville Financial Score Card

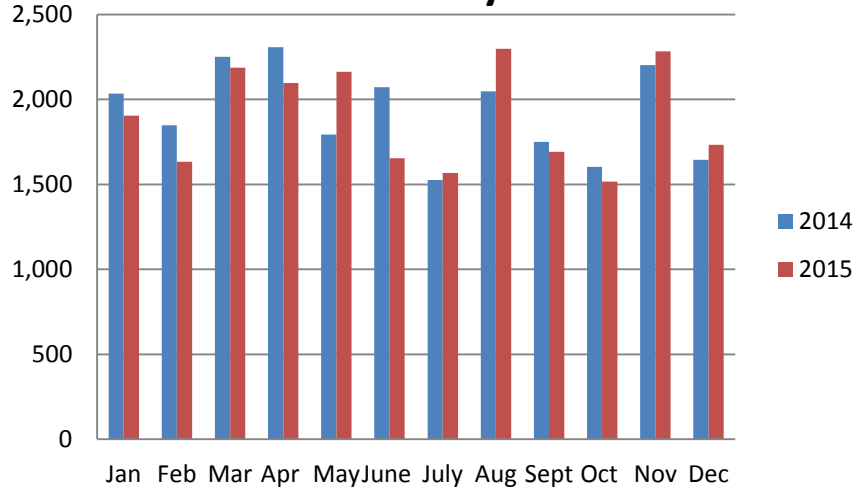


St Paul's Summerville  
Financial Score Card



**St Paul's Summerville  
Financial Score Card**

**Attendance By Month**



**Attendance By Service**

